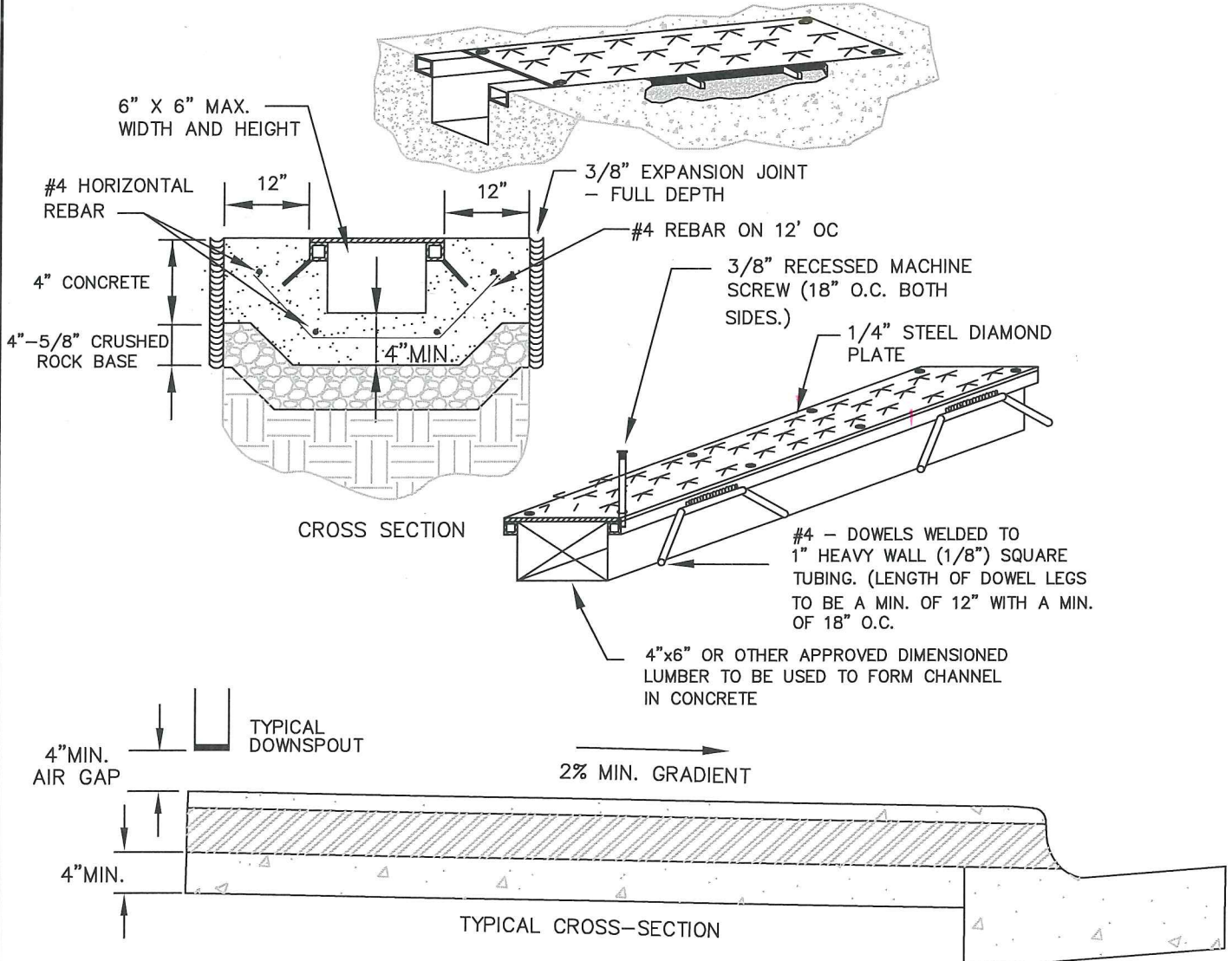


1/4" - GALVANIZED STEEL DIAMOND PLATE
OR APPROVED GRATE OR COVER



NOTES:

1. CONSTRUCTION JOINTS SHALL BE PLACED AS SHOWN OR AS DIRECTED BY THE ENGINEER.
2. CONCRETE SHALL BE 3,000 PSI.
3. THE GRATE SHALL BE FLUSH WITH THE ADJACENT SIDEWALK.
4. NO OBSTRUCTIONS WILL BE ALLOWED IN THE SIDEWALK.
5. A MINIMUM 4" AIR GAP SHALL BE MAINTAINED BETWEEN ROOF DOWNSPOUTS AND SIDEWALK DRAINS.
6. ANY VARIATION TO THIS STANDARD MUST HAVE WRITTEN APPROVAL FROM CITY ENGINEER

CITY OF LEWISTON, IDAHO PUBLIC WORKS DEPARTMENT	
SIDEWALK DRAIN DETAIL	
APPROVED FOR PUBLICATION <i>[Signature]</i> City Engineer	3/11/21 Date
DWG. NO. 1-17	