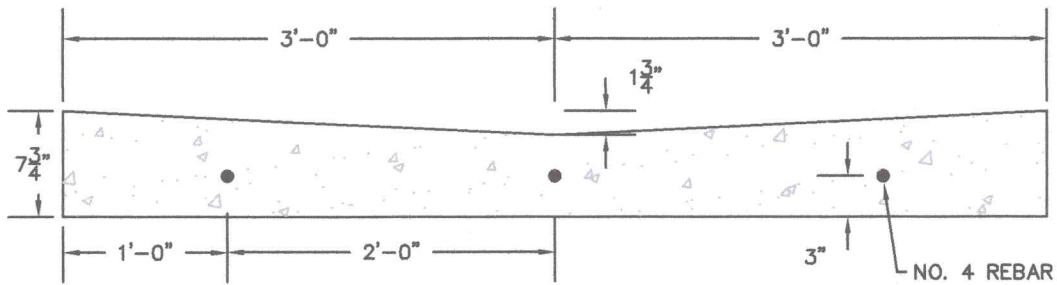


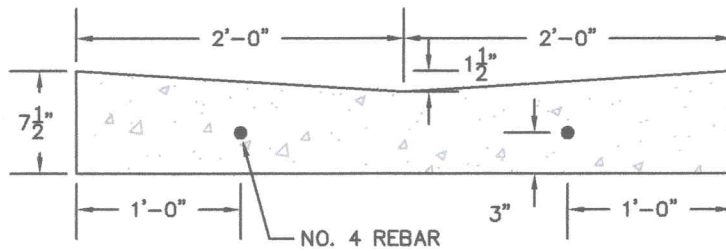
COMPACTED GRAVEL BASE TO BOTTOM OF STREET SECTION.

TYPICAL 8' CROSS-SECTION



COMPACTED GRAVEL BASE TO BOTTOM OF STREET SECTION.

TYPICAL 6' CROSS-SECTION



COMPACTED GRAVEL BASE TO BOTTOM OF STREET SECTION.

TYPICAL 4' CROSS-SECTION

CITY OF LEWISTON, IDAHO
PUBLIC WORKS DEPARTMENT

VALLEY GUTTER

APPROVED FOR PUBLICATION

Ch. O. 2-5-09
City Engineer Date

DWG. NO.

2-4