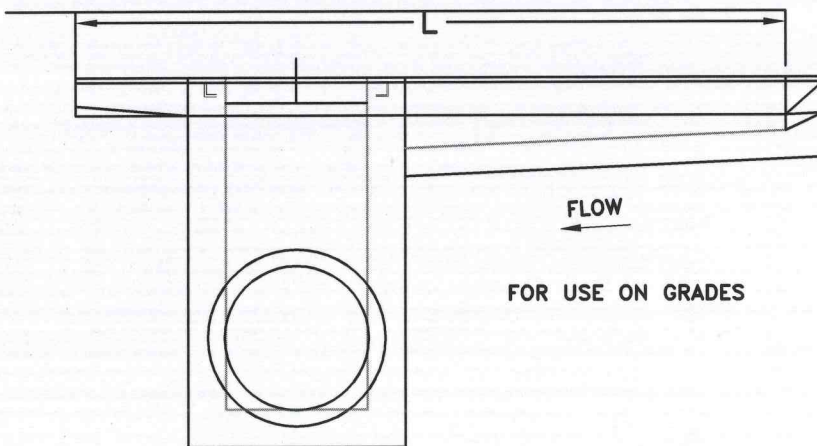


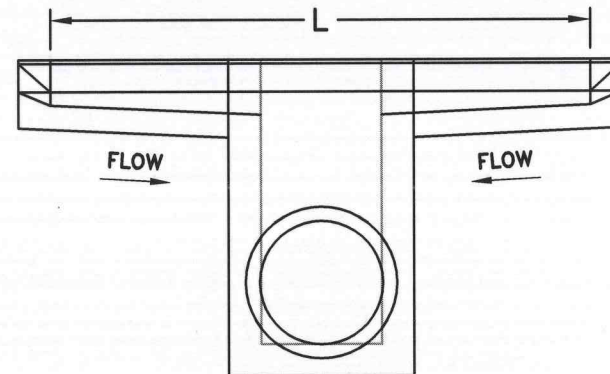
INSTALL APPROVED STEEL GRATE AND FRAME; SEE PREVIOUS SHEET FOR NOTES



FOR USE ON GRADES

NOTES:

1. ALL REINFORCING BARS ARE TO GRADE 60 STEEL WITH MIN. OF 1 1/2" CONCRETE COVER. ANY BAR IN CONFLICT WITH PIPE SHELL AND/OR TOP SLAB OPENING ARE TO BE FIELD CUT TO PROVIDE THE REQUIRED COVER.
2. ALL UNITS USED TO MEET OR EXCEED THE REQUIREMENTS ASTM C478/AASHTO M199.
3. THREE 1 1/2" DIA. WEEP HOLES IN BASIN BASE WITH 12 INCHES OF 3/4" MINUS CRUSHED AGGREGATE BASE MATERIAL COMPACTED TO 95% MODIFIED PROCTOR AS PER AASHTO T180.



FOR USE IN SAGS BOTH SIDES TO BE SYMMETRICAL

Page 2 of 2

CITY OF LEWISTON, IDAHO
PUBLIC WORKS DEPARTMENT

STORMWATER
STANDARD CURB
DROP INLET

APPROVED FOR PUBLICATION

Shawn Stebbins 12/13/16
City Engineer Date

DWG. NO.

6-10