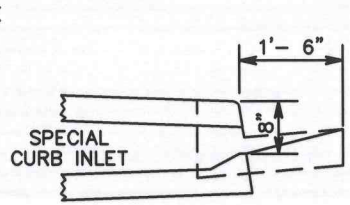
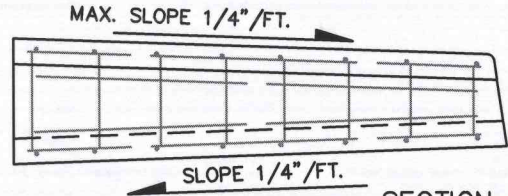


SECTION A-A

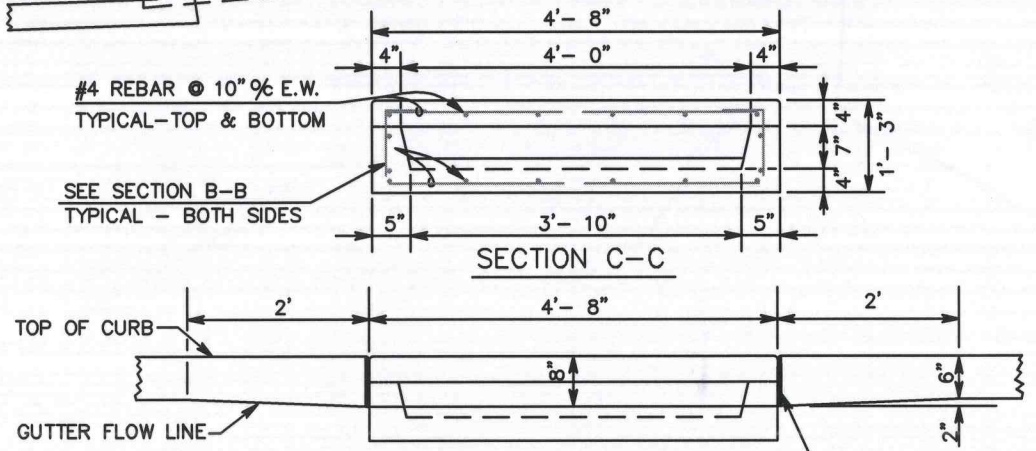


#4 REBAR @ 10" O.C. E.W.  
TYPICAL - TOP & BOTTOM

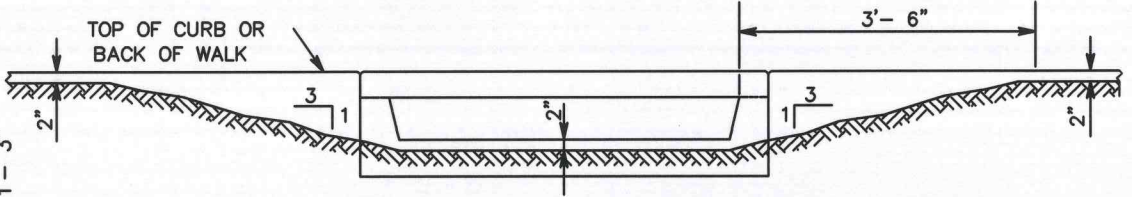
SEE SECTION B-B  
TYPICAL - BOTH SIDES



SECTION B-B  
REBAR PLACEMENT



GUTTER DEPRESSION DETAIL



OUTLET SWALE GRADING DETAIL

NOTES:

1. CURB INLET SHALL BE CONSTRUCTED IN ACCORDANCE WITH ASTM C 478 (AASHTO M 199) & ASTM C 890 UNLESS OTHERWISE SHOWN ON PLANS OR NOTED IN THE PROJECT SPECIAL PROVISIONS.
2. TOP SURFACE TO BE BROOM FINISHED.
3. ALL EXTERNAL EDGES NOT LABELED SHALL BE TROWELLED WITH 1/4" RADIUS EDGER.
4. MAX. 5% ROAD CENTERLINE GRADE; MUST BE LOCATED AT A FORCED LOW POINT.
5. MAY USE WILBERT PRECAST PRODUCT #1840 OR APPROVED EQUAL ONLY WITH WRITTEN APPROVAL FROM THE CITY ENGINEER.

M:\Standards\2010-Standards\6-StormSewer\SpecialCurbInlet\_Type2.dwg

CITY OF LEWISTON, IDAHO PUBLIC WORKS DEPARTMENT	
<h2 style="margin: 0;">SPECIAL CURB INLET TYPE '2'</h2>	
APPROVED FOR PUBLICATION City Engineer	DWG. NO. <h1 style="margin: 0;">6-11</h1>
<div style="text-align: right;">  12/13/10            Date         </div>	